



wells cathedral school

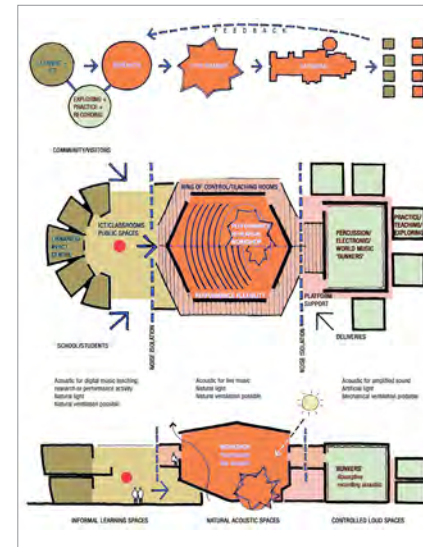
Client: Wells Cathedral School
 Value: £5 million
 Design study: Completed 2005
 Role: Architect / lead designer (Arts Team)

new school masterplan

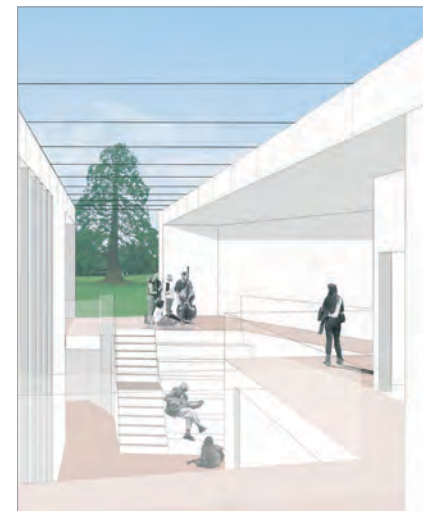
Working closely with the Head of School and Head of Music, a detailed analysis of the way the music department inhabited the existing school buildings was undertaken. Governors and specialist music students were consulted to build a picture of the ethos of the school, and to explore their vision for how they wanted to deliver their unique music curriculum.

The findings were expressed in a simple diagram which the school described as their "Intellectual Model" for the future of music. It set out the key spaces needed, and any essential interrelationships. Schedules of accommodation, together with outline performance and technical specifications allowed the whole team to assess costs and priorities, and then to select a series of affordable projects for which the school could fundraise over a number of years.

After early fundraising success, further outline design work was undertaken before the project was put on hold.



"Intellectual Model" for the school



View of the foyer common room



View inside the Orchestra Room