



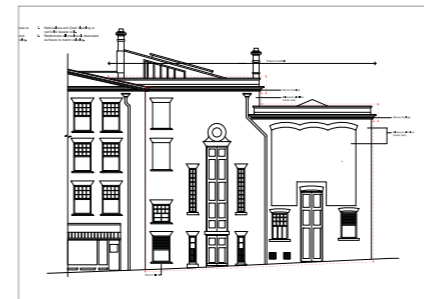
## theatre royal drury lane

Client: Really Useful Theatre Company  
 Value: various  
 Ongoing work: 2013 and ongoing  
 Role: Architect, and collaboration architect.

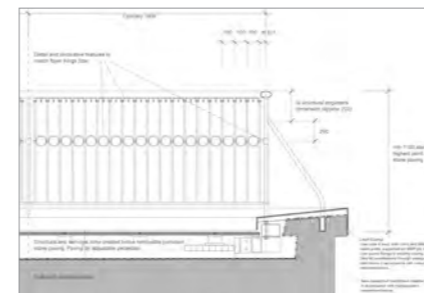
### listed building applications

We are providing architectural services, preparing listed building applications for repairs and upgrades to the Grade 1 listed theatre. Repairs requiring approval range from brickwork repairs and cleaning, through to more significant structural stabilisation of external walls and copings.

Our good working relationship with Westminster conservation officers has ensured swift approvals, meaning repairs have been able to be carried out quickly.



Proposed front facade elevation



Typical coping and balustrade detail

### portico canopy

We collaborated with Norman Bragg/Lee Fitzgerald, providing design and construction information for the conversion of the portico roof into a terrace for the Grand Saloon. The lightest possible roofing materials were selected and carefully detailed to eliminate the need to strengthen the historic structure.

The new cast iron balustrade emulates the Kings Stair balustrade inside the theatre.



Inspiration for the terrace balustrade



The completed terrace



Portico Terrace visualisation